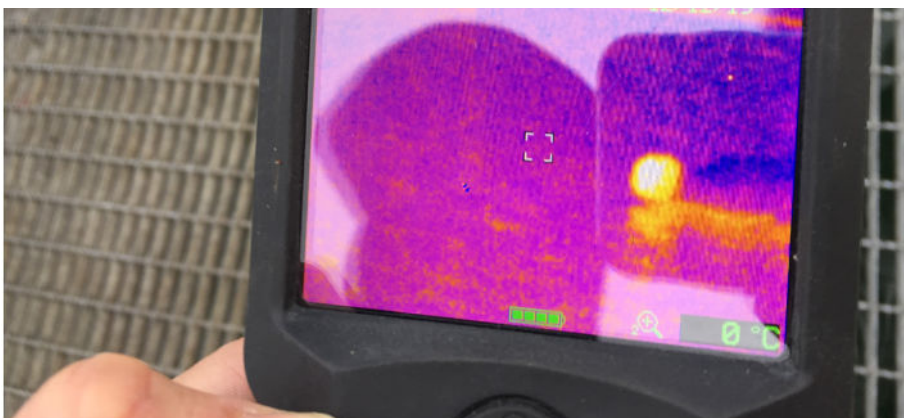
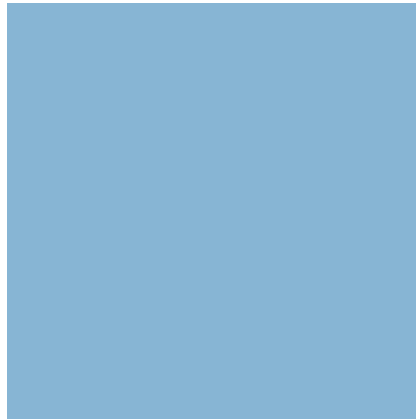




FOR PROFESSIONALS WHO SAVE LIVES

# THERMAL IMAGING HOOD

## USER INSTRUCTIONS



## USER INSTRUCTIONS

Our Thermal Imaging hood gives any adult Ruth Lee Water Rescue Manikins instant thermal imaging capabilities in the water. For use in sea and airborne search and rescue.

### 6Ah Battery

The batteries used with the Ruth Lee Thermal Imaging Hood are Li-Ion cells, with a high discharge current. The battery is designed to supply power to the Ruth Lee Ltd Thermal Image Hood and to be fully waterproof so can be safely used in wet environments.

The Total power of connected devices to the battery must not exceed 100W. Those devices must be designed to be powered with 12V input.

The battery is equipped with a number of safety features to protect against over discharge, overcharge, overload and short circuit. On the enclosure there is an E/O cord connector (for use in wet environments), piezo switch and overpressure valve.

One touch is enough to turn the battery on, which is indicated by the built-in blue LED on the EO cord connector.

To comply with IATA transport regulations, the 6 Ah battery is shipped with an initial low charge. Please plug the battery into the supplied charger and leave to fully charge. Please note the initial charge may take upwards of 4-5 hours. Once battery is fully charged and disconnected from the charger, it will remain on. If you do not plan to use it immediately, please remember to switch it off by pressing the piezo switch on the top of the battery.

Approximate operating time after a full charge: ca 1-2 hours

Please note that the operating time of the heated equipment can vary depending on different climatic conditions.

### Technical Parameters

- Capacity: 6Ah
- Operating Voltage: 12V
- Cells Type: Li-Ion
- Height: 115mm
- Diameter: 74mm
- E/O Cord Length: 60cm
- Housing Material: Poliacetal / POM / Delrin®
- Charging Time: 4-5hrs
- Weight: 0.68Kg

## HOW TO PUT THE THERMAL HOOD ON YOUR MANIKIN



### STEP 1

Everything you will need to prepare your manikin for thermal imaging training comes neatly packaged in a compact bag.

Bag Contains:

- Thermal Imaging Hood
- Pouch to hold battery in place, attached to a holster which attaches to the manikin
- Battery with E/O cable
- Battery Charger
- Blanking piece to protect the battery connecting wire when not in use



### STEP 2

Pull the hood over the head of the adult rescue manikin. It will be a snug fit, however there is sufficient stretch in the material to do this. A press stud fastens the chin strap in place.

### STEP 3

To attach the holster, place the strap and pouch around the manikin waist, then the second strap reaches up the front of the manikin is secured around the neck of the manikin.



### STEP 4

Place the battery in the pouch and the lead is secured in place using the Velcro tabs on the strap going up the front of the manikin.

### STEP 5

Connect the lead from the hood to the lead from the battery and secure any loose cable inside the overalls of the manikin.

## HOW TO USE YOUR THERMAL IMAGING HOOD

Once connected, you can keep the battery safely in the storage pouch provided. This will keep the battery secure in the water. The battery should last for between 1 -2 hours depending on water temperature.

## IMPORTANT ADVICE & INFORMATION

It is your responsibility to complete a full risk assessment for the exercise your team are performing. An essential part of the risk assessment should include the requirement for regular visual checks for damage both at the start and end of training.

Product uses a Lithium-Ion battery. Please refer to the instructions on the sleeve of the battery. We advise that you always handle the battery with care and that you complete your own risk assessment for safe handling, transportation, use and storage of the battery.

Please note the hood can be washed in a washing machine. We recommend that it be put into a net bag to protect the cables.

**\*\*IMPORTANT\*\*** - the Thermal Imaging Hood has been designed for use on Ruth Lee adult manikins only. It **MUST NOT** be worn by a live person.

Ruth Lee Ltd will not accept any responsibility for damage or injury as a result of using this product. Never connect the hood directly to the charger - only to the battery.

SPEAK TO THE EXPERTS:

📞 +44 (0) 1490 413 282 ✉ SALES@RUTHLEE.CO.UK 🖥 WWW.RUTHLEE.CO.UK



UPDATED:03.08.21